

1. Which condition does not favor the cultivation of Soya bean crop?
 - a. High temperature
 - b. Rainfall
 - c. Humidity
 - d. Low temperature

2. A farmer wants to buy a single tool that could help him in both tilling and loosening of soil as well as in removing weeds. Which of the following tool should he select?
 - a. Hoe
 - b. Plough
 - c. Cultivator
 - d. Seed drill

3. Which of the following disease is caused by a protozoan but spread by an insect?
 - a. dengue
 - b. malaria
 - c. polio
 - d. measles

4. Which nutrient of soil is replenished by cyanobacteria?
 - a. Nitrogen
 - b. Phosphorous
 - c. Sodium
 - d. Potassium

5. Who discovered the revolutionary medicine called penicillin?
 - a. Louis Pasteur
 - b. Edward Jenner
 - c. Graham bell
 - d. Alexander Fleming

6. A fiber derived by chemical treatment of wood pulp and can be used as a substitute for silk is called:
- Polyester
 - Rayon
 - Terry cot
 - Nylon
7. The fabric used for making uniforms of fire men is
- Nylon
 - Rayon
 - Bakelite
 - Melamine
8. The greenish deposit on the surface of copper vessels on prolonged exposure to moist air is due to the formation of
- Cu (OH) 2 and CuCO_3
 - Cu_2O
 - $\text{Cu (NO}_3)_2$
 - Cu (OH) 2
9. Which of the following is a exhaustible natural resource?
- Sunlight
 - Air
 - Water
 - Natural gas
10. Which of the following compound is formed by the carbonization of dead vegetation?
- coal
 - coal gas
 - coke
 - coal tar

11. A student performed an experiment. He put a burning charcoal on a tawa and covered it with a glass. After sometime the charcoal extinguished. This is because of non-availability of:
- Oxygen
 - Carbon dioxide
 - Nitrogen
 - Hydrogen
12. Which of the following is not true?
- Burning of coal releases NO_2 .
 - LPG has highest calorific value.
 - CNG is a clean fuel.
 - Incomplete combustion of coal releases Carbon Monoxide (CO)
13. Which of the following substance will burn without a flame?
- LPG
 - Camphor
 - Dry grass
 - Charcoal
14. Out of the following consequences the consequence of desertification is/are:
- Decrease in atmospheric temperature.
 - Increase in water holding capacity of soil.
 - Increased chances of floods.
 - Conversion of fertile land into a desert.
15. The unit of measurement used for expressing dimension (size) of cells is:
- centimeter
 - micrometer
 - millimeter
 - metre

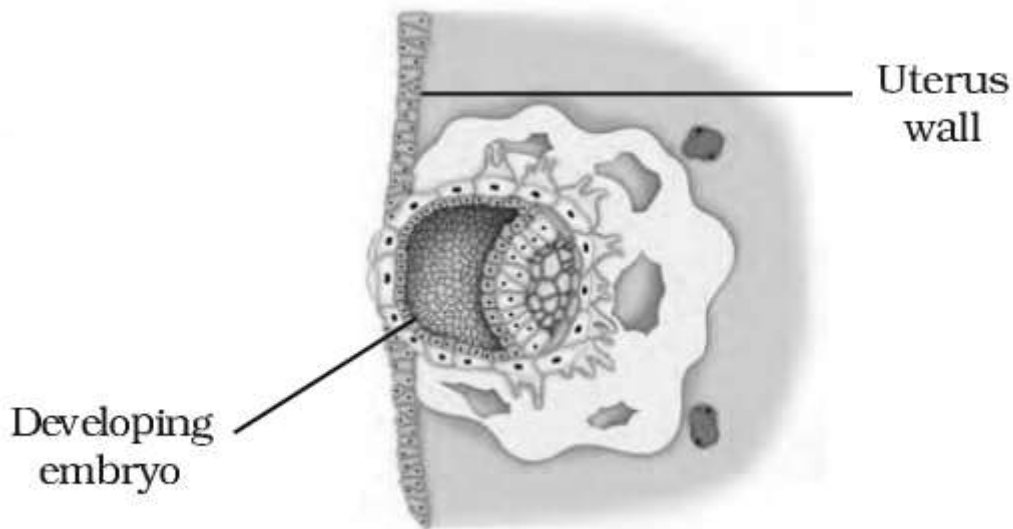
16. Which component of nucleus of cell is responsible for carrying characteristic traits from parent to their offspring?

- a. Chromosome
- b. Ribosome
- c. Cytoplasm
- d. Centriole

17. The correct sequence of events during reproduction in human beings is

- a. fertilization, gamete formation, embryo, zygote
- b. embryo, zygote, fertilization, gamete formation
- c. gamete formation, fertilization, zygote, embryo
- d. gamete formation, fertilization, embryo, zygote

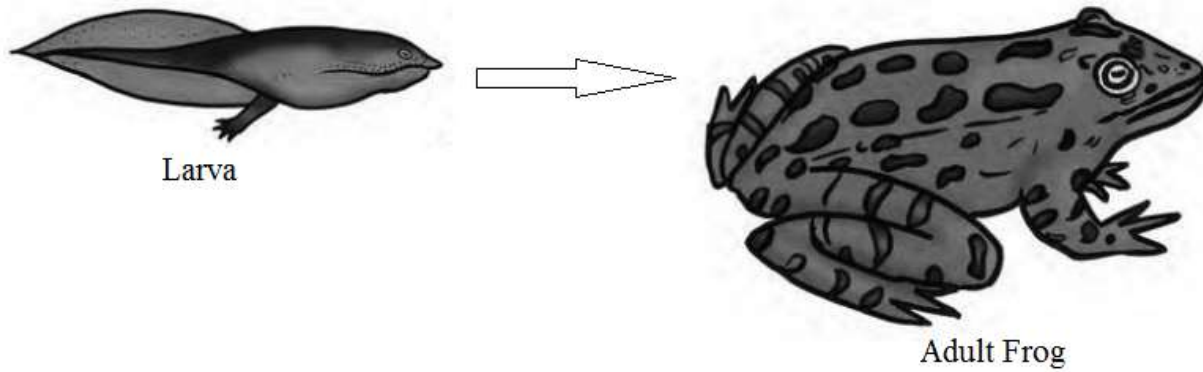
18. Which process of fertilization is being depicted by this figure? A



Better NOT to show the label- Developing Embryo, which reveals the answer

- a. Embedding of the embryo in the uterus
- b. Formation of zygote
- c. Development of an embryo
- d. Fertilization

19. What is this transformation termed as:



- a. Fertilization
- b. Metamorphosis
- c. Zygote formation
- d. Development into foetus

20. A girl is 10 years old and is 156 cm tall. At the end of the growth period she is likely to be:

Age in Years	% of full height	
	Boys	Girls
8	72%	77%
9	75%	81%
10	78%	84%
11	81%	88%
12	84%	91%
13	88%	95%
14	92%	98%
15	95%	99%
16	98%	99.5%
17	99%	100%
18	100%	100%

(Table showing average rate of growth in height of boys and girls)

- a. 120 cm.
- b. 200 cm
- c. 156 cm.
- d. 110 cm.

21. Which of the following gland is known as ductless gland?

- a. Sweat gland
- b. Sebaceous Gland
- c. Salivary gland
- d. Endocrine glands

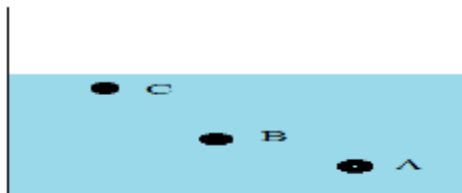
22. Which gland is responsible for releasing the male hormone testosterone and the female hormone estrogen?

- a. Sebaceous gland
- b. Pituitary gland
- c. Sweat gland
- d. Mammary gland

23. Which of the following thyroid hormone controls the metamorphosis in the development of frog?

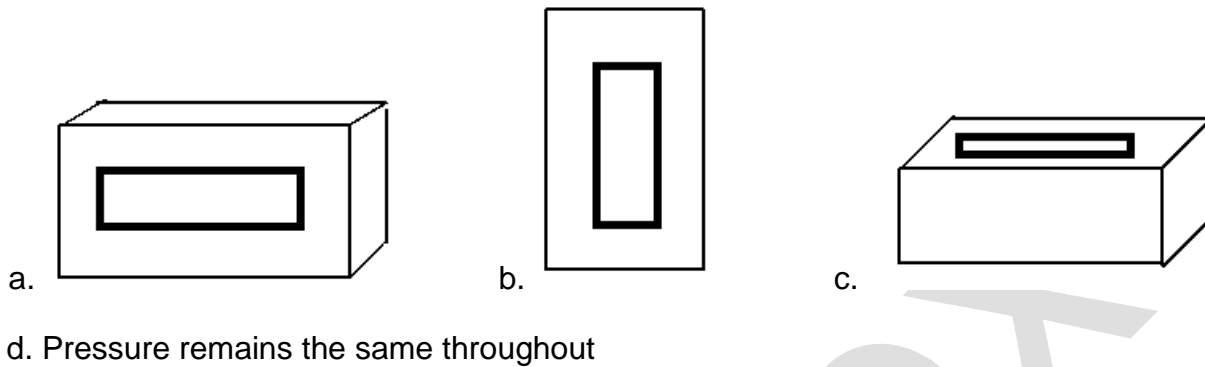
- a. Thyroxine
- b. Insulin
- c. Adrenaline
- d. sex hormone

24. What can be concluded regarding the pressure at the points A, B and C from the following figure?



- a. Pressure at A > Pressure at B > Pressure at C
- b. Pressure at A = Pressure at B = Pressure at C
- c. Pressure at A < Pressure at B > Pressure at C
- d. Pressure at A < Pressure at B < Pressure at C

25. In which of these positions does the box exert maximum pressure on the land?



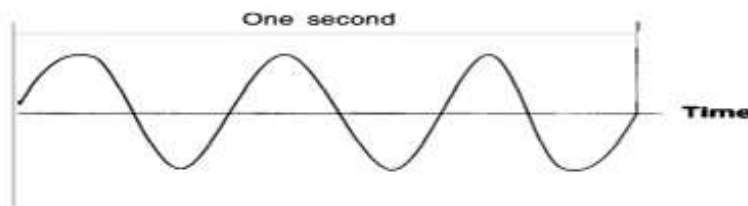
26. Raman applies some force on a moving ball in the direction of its motion. What happens to the ball?

- a. Its speed increases
- b. Its speed decreases
- c. Its direction changes
- d. Its speed remains the same

27. The loudness of sound depends on _____.

- a. its speed
- b. its amplitude
- c. its frequency
- d. its time period

28. Calculate the frequency from the figure given below:



- a. 2
- b. 3
- c. 6
- d. 4

29. Change of color of a conducting solution on passing electric current through it indicates the _____ effect of electric current.

- a. chemical
- b. heating
- c. magnetic
- d. lightning

30. Which of these devices is used to test whether an object is charged or not?

- a. Lightning conductor
- b. Kaleidoscope
- c. Electroscope
- d. Stethoscope

31. Which of the following phenomena can be caused as a result of an earthquake?

(i) Tsunami (ii) Landslide (iii) Floods (iv) Lightning

- a. (i), (ii) & (iii)
- b. (ii), (iii) & (iv)
- c. (ii) & (iv)
- d. (iii) & (iv)

32. Rainbow is a consequence of which of these phenomena?

- a. Dispersion
- b. Reflection
- c. Absorption
- d. Lateral inversion

33. The transparent part of the eye that protects the interior of the eye is called _____.

- a. Iris
- b. Pupil
- c. Cornea
- d. Retina

34. Sun moves from east to west around the earth. This implies that earth rotates from _____
- a. east to west
 - b. north to south
 - c. west to east
 - d. south to north
35. Which of the following is not a greenhouse gas?
- a. nitrogen
 - b. methane
 - c. water vapor
 - d. carbon dioxide
36. The type of pollution which is likely to affect Taj Mahal in Agra to a greater extent is _____.
- a. air pollution
 - b. soil pollution
 - c. water pollution
 - d. noise pollution
37. The constellation appearing in the summertime in the early part of the night sky is called:
- a. Ursa Minor
 - b. Ursa Major
 - c. Cassiopiad.
 - d. Orion