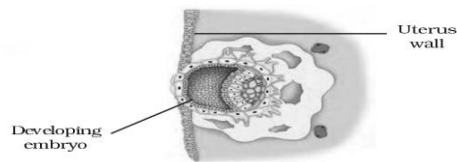


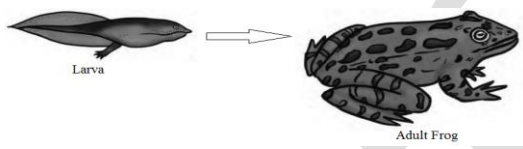
1. Which condition does not favor the cultivation of Soya bean crop?
(A) High temperature (B) Rainfall (C) Humidity (D) Low temperature
2. A farmer wants to buy a single tool that could help him in both tilling and loosening of soil as well as in removing weeds. Which of the following tool should he select?
(A) Hoe (B) Plough (C) Cultivator (D) Seed drill
3. Which of the following disease is caused by a protozoan but spread by an insect?
(A) dengue (B) malaria (C) polio (D) measles
4. Which nutrient of soil is replenished by cyanobacteria?
(A) Nitrogen (B) Phosphorous (C) Sodium (D) Potassium
5. Who discovered the revolutionary medicine called penicillin?
(A) Louis Pasteur (B) Edward Jenner (C) Graham bell (D) Alexander Fleming
6. A fiber derived by chemical treatment of wood pulp and can be used as a substitute for silk is called:
(A) Polyester (B) Rayon (C) Terry cot (D) Nylon
7. The fabric used for making uniforms of fire men is
(A) Nylon (B) Rayon (C) Bakelite (D) Melamine
8. The greenish deposit on the surface of copper vessels on prolonged exposure to moist air is due to the formation of
(A) $\text{Cu(OH)}_2 \& \text{CuCO}_3$ (B) Cu_2O (C) $\text{Cu(NO}_3)_2$ (D) Cu(OH)_2
9. Which of the following is an exhaustible natural resource?
(A) Sunlight (B) Air (C) Water (D) Natural gas
10. Which of the following compound is formed by the carbonization of dead vegetation?
(A) coal (B) coal gas (C) coke (D) coal tar
11. A student performed an experiment. He put a burning charcoal on a tawa and covered it with a glass. After some time the charcoal extinguished. This is because of non-availability of:
(A) Oxygen (B) Carbon dioxide (C) Nitrogen (D) Hydrogen
12. Which of the following is not true?
(A) Burning of coal releases NO_2 .
(B) LPG has highest calorific value.
(C) CNG is a clean fuel.
(D) Incomplete combustion of coal releases Carbon Monoxide (CO)
13. Which of the following substance will burn without a flame?
(A) LPG (B) Camphor (C) Dry grass (D) Charcoal
14. Out of the following consequences the consequence of desertification is/are:
(A) Decrease in atmospheric temperature. (B) Increase in water holding capacity of soil.
(C) Increased chances of floods. (D) Conversion of fertile land into a desert.

15. The unit of measurement used for expressing dimension (size) of cells is:
 (A) Centimeter (B) micrometer (C) millimeter (D) metre
16. Which component of nucleus of cell is responsible for carrying characteristic traits from parent to their offspring?
 (A) Chromosome (B) Ribosome (C) Cytoplasm (D) Centriole
17. The correct sequence of events during reproduction in human beings is
 (A) fertilization, gamete formation, embryo, zygote
 (B) embryo, zygote, fertilization, gamete formation
 (C) gamete formation, fertilization, zygote, embryo
 (D) gamete formation, fertilization, embryo, zygote

18. Which process of fertilization is being depicted by this figure? A



Better NOT to show the label- Developing Embryo, which reveals the answer

- (A) Embedding of the embryo in the uterus (B) Formation of zygote
 (C) Development of an embryo (D) Fertilization
19. What is this transformation termed as:

 (A) Fertilization (B) Metamorphosis (C) Zygote formation (D) Development into foetus

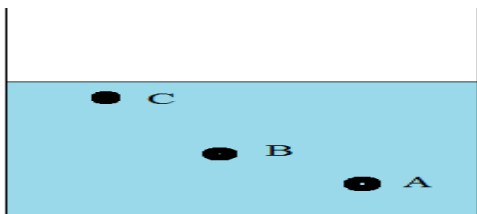
20. A girl is 10 years old and is 156 cm tall. At the end of the growth period she is likely to be:

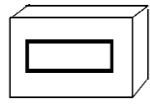
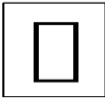
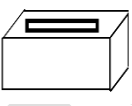
Age in Years	% of full height	
	Boys	Girls
8	72%	77%
9	75%	81%
10	78%	84%
11	81%	88%
12	84%	91%
13	88%	95%
14	92%	98%
15	95%	99%
16	98%	99.5%
17	99%	100%
18	100%	100%

(Table showing average rate of growth in height of boys and girls)

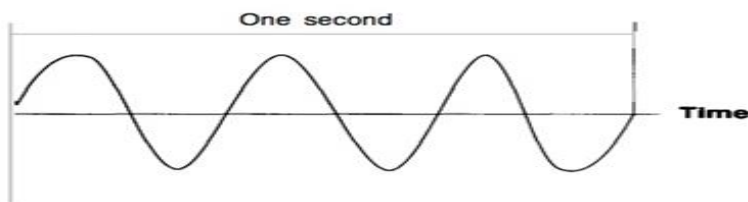
- (A) 120 cm (B) 200 cm (C) 156 cm (D) 110 cm

21. Which of the following gland is known as ductless gland?
 (A) Sweat gland (B) Sebaceous Gland (C) Salivary gland (D) Endocrine glands
22. Which gland is responsible for releasing the male hormone testosterone and the female hormone estrogen?
 (A) Sebaceous gland (B) Pituitary gland (C) Sweat gland (D) Mammary gland
23. Which of the following thyroid hormone controls the metamorphosis in the development of frog?
 (A) Thyroxine (B) Insulin (C) Adrenaline (D) sex hormone
24. What can be concluded regarding the pressure at the points A, B and C from the following figure?



- (A) Pressure at A > Pressure at B > Pressure at C
 (B) Pressure at A = Pressure at B = Pressure at C
 (C) Pressure at A < Pressure at B > Pressure at C
 (D) Pressure at A < Pressure at B < Pressure at C
25. In which of these positions does the box exert maximum pressure on the land?
- (A)  (B)  (C)  (D) Pressure remains the same throughout
26. Raman applies some force on a moving ball in the direction of its motion. What happens to the ball?
 (A) Its speed increases (B) Its speed decreases
 (C) Its direction changes (D) Its speed remains the same
27. The loudness of sound depends on _____.
 (A) its speed (B) its amplitude (C) its frequency (D) its time period

28. Calculate the frequency from the figure given below:



- (A) 2 (B) 3 (C) 6 (D) 4
29. Change of color of a conducting solution on passing electric current through it indicates the _____ effect of electric current.
 (A) chemical (B) heating (C) magnetic (D) lightning
30. Which of these devices is used to test whether an object is charged or not?
 (A) Lightning conductor (B) Kaleidoscope (C) Electroscope (D) Stethoscope

31. Which of the following phenomena can be caused as a result of an earthquake?
(i) Tsunami (ii) Landslide (iii) Floods (iv) Lightning
(A) (i), (ii) & (iii) (B) (ii), (iii) & (iv) (C) (ii) & (iv) (D) (iii) & (iv)
32. Rainbow is a consequence of which of these phenomena?
(A) Dispersion (B) Reflection (C) Absorption (D) Lateral inversion
33. The transparent part of the eye that protects the interior of the eye is called _____.
(A) Iris (B) Pupil (C) Cornea (D) Retina
34. Sun moves from east to west around the earth. This implies that earth rotates from _____.
(A) east to west (B) north to south (C) west to east (D) south to north
35. Which of the following is not a greenhouse gas?
(A) nitrogen (B) methane (C) water vapor (D) carbon dioxide
36. The type of pollution which is likely to affect Taj Mahal in Agra to a greater extent is _____.
(A) air pollution (B) soil pollution (C) water pollution (D) noise pollution
37. The constellation appearing in the summertime in the early part of the night sky is called:
(A) Ursa Minor (B) Ursa Major (C) Cassiopeia (D) Orion