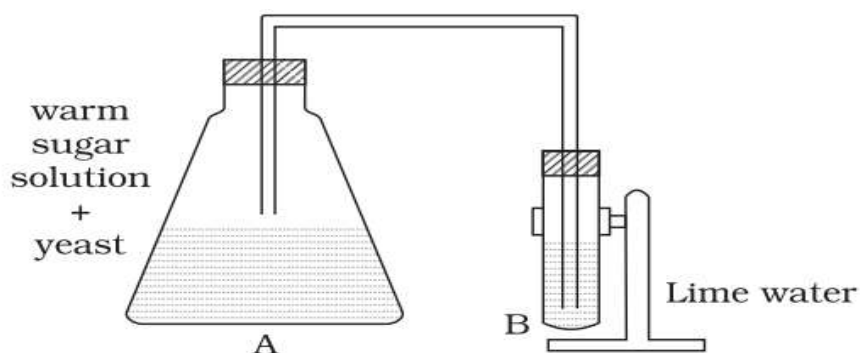


1. Which of the following statement is incorrect regarding organic manure used for good yield of crops?

- (a) Enhances water holding capacity of soil.
- (b) Possess a balance of all plant nutrients.
- (c) Adds humus to soil.
- (d) Improves the texture of soil.

2. Which of the following correctly describe the changes in test tube B?



- a. Color of the solution in test tube A will changes to blue.
- b. Temperature in the test tube B decreases.
- c. Lime water in test tube B turns milky.
- d. None of the above

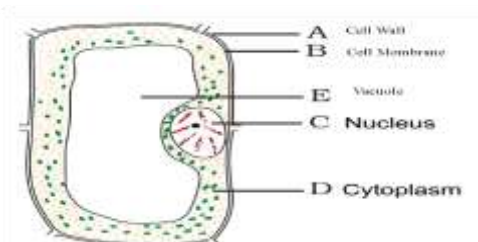
3. A company chose fiber X for manufacturing of ropes and parachutes. What is X?

- a. Polyester
- b. Wool
- c. Cotton
- d. Nylon

4. When a piece of copper wire is placed into silver nitrate solution the color of the solution changes from colorless to blue. This is due to:

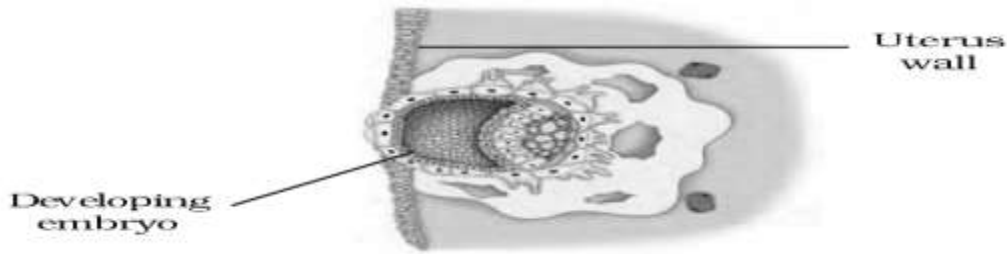
- a. The formation of copper sulphate
- b. The formation of copper nitrate
- c. The deposition of copper
- d. The deposition of silver

5. Which derivative of coal was used for metaling roads?
- a. Carbon
 - b. Coke
 - c. Coal gas
 - d. Coal-tar
6. You can boil water in a paper cup without burning the paper, because
- a. Paper is not combustible.
 - b. Paper is not reaching its ignition temperature
 - c. Water extinguish the fire when paper starts to burn
 - d. None of the above
7. A student was cooking potato curry in a copper vessel. He observed that the copper vessel used for cooking get blackened from outside. It may be due to:
- a. proper combustion of fuel.
 - b. improper combustion of the fuel.
 - c. improper cooking of potato curry.
 - d. burning of copper vessel.
8. Which of the following place assures conservation of biodiversity in their natural habitat?
- (i) Zoological garden (ii) Botanical garden (iii) Wildlife sanctuary (iv) National park
- a. i & ii;
 - b. ii & iii;
 - c. iii & iv;
 - d. i & iv
9. How is this cell different from an animal cell?



- a. Mitochondria
- b. Cytoplasm
- c. Nucleus
- d. Cell wall

10. Which process of fertilization is being depicted by this figure?

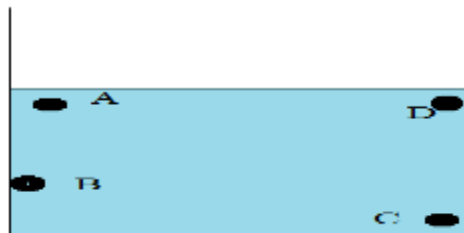


- a. Embedding of the embryo in the uterus
- b. Formation of zygote
- c. Development of an embryo
- d. Fertilization

11. Which of the following is not a part of the menstrual cycle?

- a. Maturation of egg and its release
- b. Thickening of uterine wall.
- c. Breakdown if pregnancy does not occur.
- d. Development of embryo

12. Which points are bearing same pressure?



- a. B and C
- b. A and D
- c. A and B
- d. C and D

13. What will be direction of the friction exerted by the road on the car?



- a. From right to left (\leftarrow)
- b. Vertically downwards (\downarrow)
- c. From left to right (\rightarrow)
- d. Vertically upwards (\uparrow)

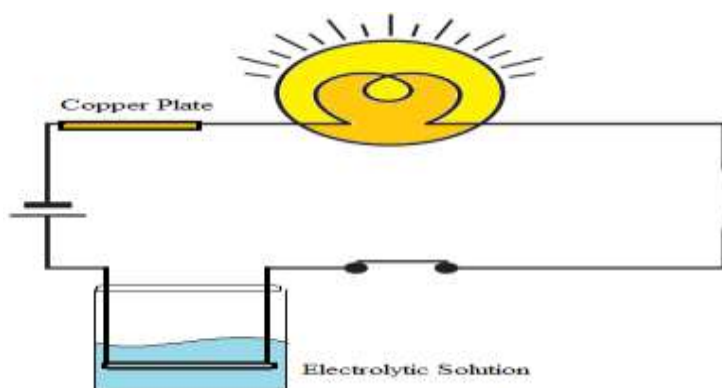
14. Which of the following is not a non-contact force?

- a. Magnetic force
- b. Electrostatic force
- c. Gravitational force
- d. Frictional force

15. Ultrasound has frequency of vibration

- a. between 20 and 20,000 Hz
- b. below 20 Hz
- c. above 20,000 Hz
- d. between 500 and 10,000 Hz

16. Which of the following solutions will not make the bulb in the figure glow?



- a. NaCl
- b. CuSO_4
- c. AgNO_3
- d. Aqueous Sugar Solution

17. In the following figure the aluminum strips are replaced by plastic strips and a charged body is brought in contact with the metal clip. What would be the observation?



- a. Plastic strips diverge
- b. Plastic strips come closer
- c. Plastic strips remain in their position
- d. None of these

18. In which of these defects of vision does the eyeball become small?

- a. myopia
- b. hypermetropia
- c. astigmatism
- d. presbyopia